



# GLAD TIDINGS



Vol. 29, Iss. 9 Prince of Peace Lutheran Church, Gaithersburg, MD November 2010

## Flu Shots

National Lutheran Home & Village at Rockville Celebrates 120 Years of Service to Seniors: Senior Flu Shots are only \$1.20!

**When?** Tuesday, November 2, Noon - 4:00 pm

**Where?** National Lutheran Home & Village  
9701 Veirs Drive, Rockville, MD 20850  
301-424-9560; [www.nlhv.org](http://www.nlhv.org)

Only a limited number of flu shots are available so first come, first served. For more information, or directions, visit our website or give us a call. Fight the flu and stay healthy this season with a \$1.20 flu shot for seniors 60-plus.

## All Saints Day

During the worship service on Sunday, November 7, we will honor all those who have gone before us by reading their names and lighting candles. If there are people whose names you'd like read out loud (parents, grandparents, godparents, relatives, friends etc.) please send their names to Pat in the office at [office@poplutheran.org](mailto:office@poplutheran.org). If the person has died in the past year, please indicate.

## Practice Makes Perfect!

Christmas Pageant rehearsals will start Sunday, November 7 at 2:00 pm. The rehearsals will last until 4:00 pm and will be held at the church.

**Are You a Mom?** Are you craving an hour of fellowship with other moms just like you? Then come and join the **Prince of Peace Moms' Group**. We meet every Sunday morning from 9:45 - 10:45 in the room next to the preschool/ kindergarten Sunday school room. Bring your coffee, your frustrations, your praise, and your prayers and find comfort, support, and fun with other PoP moms. If you have any questions or comments please contact Jen Hundt. See you on Sunday!

## Saturday Men's Group

Are you a Manly Man? The Men's Group would like to extend an open invitation to men of any age to

come enjoy hot coffee, pastries, and fellowship. We meet at 8am to discuss the upcoming lectionary (bible readings) and further our understanding of His Word. This is one of the original mission groups at Prince of Peace and you are always welcome! Please contact Mark Ludder ([ludder@comcast.net](mailto:ludder@comcast.net)) with any questions or just show up and share!



## November Highlights

### Every Sunday

8:30 am Contemporary Worship

9:45 am Sunday School

11:00 am Traditional Worship

Baby-sitter available during Services

### Every Tuesday

10:00 am Quilters

### Every Wednesday

12:00 pm Bible Study

5:30 pm High School Youth Group

7:30 pm Adult Choir

### Every Thursday

5:00 pm Youth Choir

5:00 pm Bible Study

7:30 pm Grace Notes

### Every Saturday

7:45 am Men's Group

5:00 pm Saturday Evening Worship



## From Pastor

### Sarah...

Pastor Sarah Schlerschligt  
([pastorsarah@poplutheran.org](mailto:pastorsarah@poplutheran.org);  
301-869-3666)

#### Our generous God.

This past month, we've had an amazing outpouring of generosity at Prince of Peace. In early October, over 200 people walked in our mini-walk for the homeless to benefit Gaithersburg HELP. Plus, we raised over \$3,000 in support for the pantry. At the auction, donations from the congregation and the community kept on coming. The evening was a blast, and with the matching funds from a member, we raised \$24,000 and counting.

Generosity is more than money and things, of course. These are easy to count, but the most important thing you can give to the world is yourself.

Every time you open up yourself to another person in a conversation, a greeting of peace, or a kind word, you are extending generosity. This kind of generosity goes on here at Prince of Peace all the time and was especially evident in the stories of the 30 people who joined our congregation in October. Many of them came to know God's love through this congregation because someone in the church shared themselves generously.

We are a generous church, but that's only because we have a generous God. God not only gave us this wonderful world and relationships and joy, God also gave us Jesus, his very own self. Doesn't that knock your socks off?

As that famous scripture passage from John 3:16 says: *God so loved the world that he gave...* God gave so we give too.

If you are like everyone else I know, the abundance of all that God has given gets quickly lost in the hub-hub of daily life: another load of dishes to unload; laundry to fold; groceries to buy; college applications to fill out; bills to pay. It's not long before we lose sight of God's generosity and what quickly follows is that we feel depleted ourselves, with nothing left to give.

Here's an exercise I recently heard of that might help fill up the tank. Whenever you are doing a household task that you'd rather not do, try to turn it into a time of gratitude. Emptying that dishwasher becomes "Thank you God that my family had food to eat and dishes to eat on." Raking the leaves becomes: "Thank you God for the beauty you alone can make and the physical strength to be doing this work." Helping your child with homework becomes "thank you that my child can go to school; thanks for this child."

God's blessings flow down upon us and we receive more than we can hold. Praise be to our generous God whose gifts don't stop coming.

Peace and joy (and Happy Thanksgiving)!

Pastor Sarah Schlerschligt



## You Made a Difference in September at PoP

- Average Weekend Worship Attendance in August: 182
- Our Cookie Brigade "cooked" 3 first-time visitor households!
- **Transitions:** Congratulations to Allison and Matthew Malloy on the birth of their daughter, Calista Marie, on September 23!

## Financial Snapshot

### Giving & Spending Update:

September 2010:		Year to Date:	
Actual		Actual	
Income	\$ 28,639.45	Income	\$ 291,082.41
Actual		Actual	
Expenses	\$ 36,500.60	Expenses	\$ 331,434.30
Budgeted		Budgeted	
Expenses	\$ 37,499.25	Expenses	\$ 337,493.25
Actual		Actual	
Difference	\$ (7,861.15)	Difference	\$ (40,351.89)

Although our deficit increased in September, we're about where we were at this time last year. Last year we made it, and we're confident that we will this year as well!



### Online Giving at Prince of Peace

Through a secure online link everyone can now make one time or recurring donations using your bank account, credit or debit cards, for current or special funds, or set up or manage a recurring donation through Simply Giving without having to go through the church office. We hope that this will make it easier and more convenient for folks to make donations to Prince of Peace, and that this will further reduce the stress of having to remember checkbooks when you come to worship. The link to the secure online giving page can be found on the right columns of our homepage, our Stewardship page and our Care and Serve main page.

## Stewardship

### Creation Care

#### Garden Report

*Some like it hot...and some like it hotter.* The latter group includes clients of Gaithersburg Help who took home hot peppers such as Jalapenos, Cayennes, Caribbean Reds, Super Chilis (plus Bell, Banana, and Paladin peppers for sissies) grown in PoP's Fruitful Fields common plots. Peppers were delivered to Gaithersburg Help by Peg Welborn every week from mid-July through mid-October, along with lots of tomatoes and occasionally

cucumbers, zucchinis, beans, and carrots.



Question: Wouldn't hot peppers be more useful in the winter?



### Mission Statement

Our mission statement is, "As we are called by God to be stewards of creation, the Creation Care Team shall promote appreciation, conservation, and sustainable use of natural resources in all aspects of congregational life and in the outside community through:

- Contemplation, prayer, and worship;
- Designing and implementing environmental education programs and activities;
- Regularly assessing and promoting practices that reduce the environmental footprint of our church;
- Advocating for environmental stewardship in the wider community."

The Creation Care Team meets the first Saturday of each month from 9 - 10:30am. Please feel free to join us if you are interested in helping out or even just want to see what is going on. Contact Pastor Sarah for more information at [pastorsarah@poplutheran.org](mailto:pastorsarah@poplutheran.org).

## Education

Susan Junghans ([KSjunghans@verizon.net](mailto:KSjunghans@verizon.net))

### Youth Ministry

Please refer to the website calendar or the Youth Ministry bulletin board for details about events throughout the year. Also, don't forget that the High School kids meet weekly on Wednesdays from 5:30-7:30 PM. If you have any ideas or would like to volunteer, please call Kim Drissel at (301)349-2848 or email at [Drissels@comcast.net](mailto:Drissels@comcast.net).

### Adult Confirmation

The Clay Pots adult confirmation class has begun! Fourteen people are committed to a process of learning about the foundations of faith from now until the Easter Vigil, when they will affirm their faith together. Please keep our Clay Pots in your prayers: "For we have this treasure (knowledge of God) in clay pots" - 2 Corinthians.

## Fellowship

Lesa Sullivan ([lesasullivan@comcast.net](mailto:lesasullivan@comcast.net); 301-330-3686)

### Interested in Fellowship?

Everyone is welcome to attend the monthly Fellowship meetings which are held at the church the 4<sup>th</sup> Tuesday of each month at 7:30. For more information, call Lesa Sullivan at 301-330-3686.

## Social Ministries

Jennifer Maloney ([maloney.jenn@gmail.com](mailto:maloney.jenn@gmail.com); 301-602-6358)

### Help the Homeless Update

We were blessed with another gorgeous day for our annual Mini-Walk for the Homeless on October 10. Many thanks to all who participated: walking, registering, sponsoring, and praying! A special Thank You to the High School students for all their help with the Walk - we couldn't have done it without them! The Walk T-shirts have arrived so be sure to pick one up from church if you want one. We ended up with 209 registered walkers, surpassing Pastor Sarah's goal of 200, and we raised \$3,330 for Gaithersburg HELP. When our walker count is included with all the other congregations and schools walking for HELP, it should earn a \$25,000 bonus for Gaithersburg HELP. Way to go!

## Gaithersburg HELP

### PB&J for the Hungry

Thanks to everyone who donated Peanut Butter & Jelly to the



Gaithersburg HELP Food Pantry during September and October. We had a great response!

Your ongoing food donations are critical, but also please consider volunteering - opportunities exist for a few hours per month or more. For more information about Gaithersburg HELP, please visit their website at [www.gaithersburghelp.org](http://www.gaithersburghelp.org).

## The National Lutheran Home's

**Fall Festival** is coming on Saturday, November 13, 9:30am-2pm. Come enjoy shopping for wonderful treasures, handmade crafts, baked goods, fudge, and much more. Enjoy a delicious lunch 11am-1pm. Enjoy the Home Chorus as they perform at 2:30pm. Independent Living Cottage tours at 10:30am and 1:00pm. Donations of baked goods and used household items, books, and jewelry are needed. Call 301-424-9560 if you want to make a donation. All proceeds benefit the residents of the Home. The Home is located at 9701 Veirs Drive, near Wootton Parkway in Rockville. For more details and a map, pick up a flier from the Social Ministry table in the foyer.

### Volunteer Opportunities

Do you sew? We're looking for a few volunteers who know how to use a sewing machine to assist with mending clothes. Join our sewing club - we need you on Thursdays 9:30 to noon!



For more information, contact Volunteer Services, 301-354-8447 or [volunteers@nlhv.org](mailto:volunteers@nlhv.org).

## It's Time for the United Way!

United Way, CFC, and other workplace giving contributions account for a large percentage of non-profit organizations' income. Please consider designating your employer-sponsored drive (United Way, CFC, America's Charities, etc.) contribution to the following charities. Our congregation is a supporter of these organizations. CFC/United Way codes are shown below (some orgs only have a CFC #).

**Gaithersburg HELP #30374/#8432**

Assists local residents with food, diapers, prescriptions, and transportation

**Upper Montgomery Assistance Network #15276/#8881**

Provides emergency funds for local families facing eviction or loss of utility service

**Lutheran Social Services #78343/#8146**

Provides assistance in the areas of foster care, refugees, immigrants, AIDS, abused women and children, and the disabled

**Lutheran Volunteer Corps #54430(CFC)**

A year-long volunteer service program which provides volunteers for shelters, medical clinics, tutoring programs, and advocacy work on housing, hunger, etc.

**National Lutheran Home #12809(CFC)**

Provides a continuum of care for the aged of the Lutheran community regardless of their ability to pay

**N Street Village #90946/#8281**

Provides meals, emergency shelter, support groups, medical care, counseling, and treatment programs for homeless women and low-income families in DC

**Interfaith Works**, formerly Community Ministries of Montgomery County, sponsors a community-based shelter, to provide shelter and rehabilitative services to homeless women in Montgomery County. The shelter, which currently serves up to 35 women, started in 1983, rotating among congregations, until it moved into a permanent facility in 1997. Congregations continue to play an essential role, providing all of the meals, serving supplies, kitchen volunteers, and more. Social Ministry has offered the culinary skills of PoP members to provide breakfast, lunch, and dinner for one day in November. Vickie Brown and Deborah Kalas are coordinating. To volunteer, contact Vickie at [vickielbrown3@gmail.com](mailto:vickielbrown3@gmail.com) or Deborah at [dkalas@empowerit.com](mailto:dkalas@empowerit.com).

**Fisher House** provides hospitality and services to next of kin, extended family members, and patients at Walter Reed Army Medical Center. Most of the patients served during Operation Iraqi Freedom and Operation Enduring Freedom. Families of soldiers stay at

Fisher House, close to Walter Reed, so they can visit, comfort, and support their soldiers. Fisher House needs snacks for the pantry and meals that family members can reheat and enjoy at their convenience.

In November, Social Ministry wants to stock the pantry and is collecting:

Individual servings of Granola Bars, Cup of Soup, Juice Boxes, Meals in the bowl, Chips, Crackers. Paper products, including Paper Towels, Napkins, Paper Plates, and Toilet Paper.

In December, PoP will prepare meals for the Fisher House guests. For more information about the projects, contact Jennifer Maloney at [Maloney.jenn@gmail.com](mailto:Maloney.jenn@gmail.com) or Deborah Kalas at [dkalas@empowerit.com](mailto:dkalas@empowerit.com).

For more information about Fisher House, visit <http://www.wramc.army.mil/visitors/visitservice/meals/fisher/pages/default.aspx>

**The Giving Tree**

Every Christmas PoP members share God's love, bringing joy to children and families through the City of Gaithersburg's Secret Santa program. Each year this program helps children whose families are unable to provide a Christmas. School counselors identify the children, who are given a 'wish list.' Children choose two toys and two clothing items. Last year, Prince of Peace provided gifts for 40 children. Look for the Giving Tree in the narthex early in November. For more information, contact Kathy Rossmeisl at [klrossme@verizon.net](mailto:klrossme@verizon.net).

**Gifts of Hope**

Tired of shopping at the mall? Looking for new, more meaningful ways to honor family and friends? Have you considered alternative giving?

Traditional gift giving involves buying an item and giving it to a relative or friend. Alternative giving differs in that it involves buying a symbol of a gift and giving the symbol to someone. The actual item goes to someone who needs the gift. For example, traditionally, a child might give a small bottle of perfume to her teacher at Christmas. Alternatively, the child might give her teacher a Christmas card that tells the teacher that a basket of books has been made available to needy children as a Gift of Hope.

Gifts of Hope is the alternative giving program of the Metropolitan Washington, DC Synod. Since 1993, Metro DC Synod have sponsored Gifts of Hope and raised more than \$2 million. In 2009, nearly 5,000 Gifts of Hope were purchased. Thrivent Financial for Lutherans contributed a grant of \$3,840 for a total of \$123,008 raised and distributed to the beneficiary organizations. There are no overhead expenses in Gifts of Hope. Every dollar that you spend on a Gift of Hope is spent for that purpose. Together, we spread the joy of God's love here and throughout the world. Thank you for considering Gifts of Hope; please visit <http://www.giftsofhopemetrodc.org/>

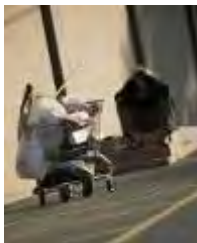
Look for the Gifts of Hope market in the narthex during Advent.

#### ADVENT SERVICE OPPORTUNITY

Social Ministry is looking for a Gifts of Hope Coordinator. Ellen Michael, who has been coordinating this ministry for many years, is looking for her replacement to help this year and take over in 2011. Through this ministry, PoP members can give Gifts of Hope and good works while supporting social justice organizations in our community and abroad. For more information, contact Ellen Michael at [rodandellen@comcast.net](mailto:rodandellen@comcast.net) or Jennifer Maloney at [Maloney.jenn@gmail.com](mailto:Maloney.jenn@gmail.com).

#### Refuge in Times of Trouble

If you know someone who is sick, in the hospital, or in need that is a member of the congregation, please let us know! The Social Ministries Committee can offer services such as food, cards, or other specific needs. We can't help if we don't know. Contact Pastor Sarah Scherschligt at 301-869-3666 or at [pastorsarah@poplutheran.org](mailto:pastorsarah@poplutheran.org) if you need help or know of someone who does.



**Join the Team!** Want to become a part of the Social Ministries Team? Contact Jennifer Maloney at 301-602-6358; [Maloney.jenn@gmail.com](mailto:Maloney.jenn@gmail.com) with questions or for more information.

**Special Thanks to  
Neil Howard for the  
360° rendering of  
exquisite beauty  
last winter at  
Prince of Peace...**



## Women's Book Group

All PoP women and friends are invited to the November book group meeting on Thursday, November 18, starting at 7:30 pm at the home of Karen Kimmel-Miltzer. Karen lives at 110 Chevy Chase St. (in Kentlands), Gaithersburg. Please RSVP to Karen at [kjsmartmov@starpower.net](mailto:kjsmartmov@starpower.net); 240-246-0672.

The group will discuss *A Thread of Grace* by Mary Doria Russell. The novel was reviewed in *Publishers Weekly*: "Busy, noisy and heartfelt, this sprawling novel by Russell...chronicles the Italian resistance to the Germans during the last two years of WWII. Three cultures mingle uneasily in Porto Sant'Andrea on the Ligurian coast of northwest Italy – the Italian Jews of the village, headed by the chief rabbi Iacopo Soncini; the Italian Catholics, like Sant'Andrea's priest Don Osvaldo Tomitz, who befriend and shelter the Jews; and the occupying Germans invited by Mussolini's crumbling regime...The action moves swiftly, with impressive authority, jostling dialogue, vibrant personalities and meticulous, unexpected historical detail. The intensity and intimacy of Russell's storytelling, her sharp character writing and fierce sense of humor bring fresh immediacy to this riveting WWII saga."



Mark your calendars for the Annual Christmas Book Group Party and Book Swap: **Thursday, December 9:** *The Noticer: Sometimes, all a person needs is a little perspective* by Andy Andrews,

host Reina Panning

All PoP women are invited to join the group for one or more meetings; contact Jennifer Maloney at [Maloney.jenn@gmail.com](mailto:Maloney.jenn@gmail.com) to be added to PoP Women's Book Group list.

## Women's Luncheon

**November 8:** The PoP women's luncheon will be at 11:30 am at the home of Karen Kimmel-Miltzer. Please bring your lunch and something to drink. Please let others know the change in date! Call or email Karen if you have any questions at [kjsmartmov@starpower.net](mailto:kjsmartmov@starpower.net); 240-246-0672.



## Upcoming Events

**November 21:** Council intends to bring to the congregation for approval several prototypes of new road signs.



The printout that Pastor Steve and David Yaney are holding is actual size, 5'x10'.



Sign examples:

1. The main road sign, V-shaped, 5'x10'
2. A "Meeting Here" sign with changeable panels which lists all the groups that use our facility
3. Two posts with a changeable banner (to replace our current portable signs)
4. "Welcome to PoP" and "Parking" signs to replace our current signs of the same purpose
5. A directional 2'x3' ft sign to be installed at entrance off Route 28

## Special Dates

- All Saints' Day, November 1
- Daylight Savings Time Ends, November 7
- Veterans' Day, November 11
- Thanksgiving Day, November 25



## A Little Extra Something

• Live for today, but hold your hands open to tomorrow. Anticipate the future and its changes with joy. There is a seed of God's love in every event, every unpleasant situation in which you may find yourself.

—Barbara Johnson

• Faith is a bird that feels dawn breaking and sings while it is still dark.

—Rabindranath Tagore

• Above all else, know this: Be prepared at all times for the gifts of God and be ready always for new ones. For God is a thousand times more ready to give than we are to receive.

—Meister Eckhart

• No God, No Peace.  
Know God, Know Peace.

—Unknown

### (On Saddle River Drive)

#### A Furnace of Coal

Beloved, would you give me the white-petal tree  
Whose blossoms are poured like honey,

Where falcons soar in an azure sky  
And the long-legged herons go flying by,

Where oak leaves bear the morning dew  
And the rays of sun that gild them through?

Would you give me those tiny wrens that sing  
As if they bore my wedding ring?

Oh, I am shackled to the beauty of things:  
The red-crowned maple, a monarch's wings,

The glory that leads me to God like a flame,  
To the grace that calls us each by name.

What love is this in the dark-lit caverns of my soul?  
Like diamonds made within a furnace of coal.

—Susan Weiner,  
PoP member



## Contact the Pastors

Pastor Steve and Pastor Sarah are working together to make sure that pastoral care needs are met. To be certain that one of them is always "on," Pastor Steve takes Fridays off while Pastor Sarah takes Mondays off. You can reach both of them at the church office, or contact them by cell phone or email: Pastor Steve: 301-980-0160; [pastor@poplutheran.org](mailto:pastor@poplutheran.org); Pastor Sarah: 202-870-8363; [pastorsarah@poplutheran.org](mailto:pastorsarah@poplutheran.org).

*Glad Tidings* is published monthly (July/August and December/January issues combined) by:

Prince of Peace Lutheran Church  
11900 Darnestown Road  
Gaithersburg, Maryland 20878-2210  
E-mail: [office@poplutheran.org](mailto:office@poplutheran.org)  
Web: [www.poplutheran.org](http://www.poplutheran.org)

Pastor ..... Steven Buechler  
Associate Pastor ..... Sarah Scherschligt  
Council President ..... David Yaney  
*Glad Tidings* Editor..... Kris Sheely  
Production ..... Martha Rogers  
Photography ..... Neil Howard

Articles for the November issue of *Glad Tidings* are due **November 21, 2010**. Please e-mail articles to [kristen.sheely@gmail.com](mailto:kristen.sheely@gmail.com) or deliver to the newsletter mailbox outside the church office. Photos and/or graphics are welcome!  
*Glad Tidings* is online at [www.poplutheran.org](http://www.poplutheran.org).

© 2010 Prince of Peace Lutheran Church