



GLAD TIDINGS



Volume 29, Issue 2 Prince of Peace Lutheran Church, Gaithersburg, MD March 2010

Annual Potluck Lunch and Congregational Meeting

Because of snow, the Annual Congregational Meeting was postponed. In accordance with our bylaws, the Annual Congregational Meeting will now take place on Sunday, March 7 at 1 pm. All confirmed members are urged to attend! A pot-luck lunch will precede the meeting. Copies of the annual report are available at the church. Reports (excluding the financial information) are also available online at:



www.poplutheran.org/Media/cong_meeting/2009_annual_report.pdf

Lenten Events

Wednesdays in Lent: March 3, 10, 17, 24

Soup Suppers 6:15 - 7:15

Vespers with Faith statements 7:15-7:45

In Lent, God renews our spirits through the miraculous journey of repentance and forgiveness. It's a special time to grow in your connection with God and one another. For more information on activities at PoP during Lent, please go to our Lent website page:

www.poplutheran.org/worship/lent10.html

Join us for Holy Week and Easter Worship!

Mundy Thursday, April 1 at 7:30 pm

Good Friday, April 2 at 7:30 pm

Easter Vigil, April 3 at 8 pm (Note: this replaces the regular 5 pm Saturday service)

For more information about Holy Week at PoP, please go to our Holy Week website page:

www.poplutheran.org/worship/holyweek10.html

Easter Sunday, April 4

Festival Worship services at

8:30, 10:00, & 11:30 am

Easter Egg Hunt for children at 9:45 am

Because last Easter we dramatically exceeded seating capacity, the Pastors and the Worship & Music Team have decided to add a third Easter Sunday morning service. For Easter Sunday only, this slightly changes the regular morning worship schedule. Please take note of this, and invite friends and neighbors, since this change will ensure that we have room for everyone!

For more information about Easter at Prince of Peace, please go to our Easter website page:

www.poplutheran.org/worship/easter10.html



March Highlights

Every Sunday

8:30 am Contemporary Worship

9:45 am Sunday School

11:00 am Traditional Worship

Baby-sitter available during Services

Every Tuesday

10:00 am Quilters

Every Wednesday

12:00 pm Bible Study

5:30 pm High School Youth Group

7:30 pm Adult Choir

Every Thursday

5:00 pm Youth Choir

7:30 pm Grace Notes

Every Saturday

7:45 am Men's Group

5:00 pm Saturday Evening Worship





From Pastor Steve...

Pastor Steve Buechler
(pastor@poplutheran.org;
301-869-3666)

“Therefore I tell you, do not worry about your life ... and can any of you by worrying add a single hour to your span of life?

...but strive first for the kingdom of God and his righteousness, and all these things will be given to you as well” (Matthew 6:25-33).

In the Sermon on the Mount, Jesus spends a considerable amount of time calling his disciples not to worry so much! I often need to hear those words, and lately, many of us have had good reason to be worried and anxious. Many of us are worried about the economy and the possibility or actuality of losing our jobs. Many of us continue to be worried about the impact of the ELCA’s Churchwide Assembly on our congregation and denomination. And as I write this in the middle of the second round of “Snowmageddon,” many of us are worried and anxious about the disruptions that this incredible amount of snow will have on our jobs, our schools, and our personal lives.

These are all real problems. Jesus never said that they weren’t. And he promised us that God knows what we need even when our needs and problems seem overwhelming. Yet what Jesus cautions us against is the human tendency to think that somehow excessive worrying can fix things! To struggle against this, Jesus taught us to strive first for God’s kingdom, and God’s righteousness, and leave the worrying up to God.

But what exactly does that mean? At our Council meeting in December, I read an excerpt from a [recent article in The Lutheran](#) in which the author talked about the fact that the anxiety that we’ve been experiencing in the Church recently isn’t made better by focusing on the anxiety. Instead, the only way to move beyond the anxiety is to get re-focused on our mission as a Christian community. I think that’s exactly what Jesus meant. If we want to get beyond worrying about problems great and small, long-term and short-term, we need to focus on mission.

Jesus gave his first disciples the gift of a renewed relationship with God and he called them into community with one another. Through their community, they praised God, supported one another in faith, and served others in Jesus’ name. Through our church we seek to do the same. In 2010, Prince of Peace’s mission as a church community is to **grow as modern disciples of Jesus by deepening our connections to God and to one another.**

In the coming year, we will focus on:

- Hope-filled worship
- Faith formation
- Strengthening our congregational community
- Opportunities to volunteer and serve others
- Intentionally inviting others to connect with God and with us

We need everybody to be involved in our mission, and there’s a place for everyone in big ways and small ways. I’m looking forward to talking more about this at our Annual Meeting on March 7, and indeed, throughout the year. But most of all, I’m looking forward to the ways that we’re going to grow in mission together this year!

Sure, like everyone else, we have a lot to worry about if we want to. But Jesus has given us something more important to do! Let’s make this year not about worry, but about the mission Jesus has given us!

Yours in Christ,

Pastor Steve Buechler



You Made a Difference in January at PoP

- Average Weekend Worship Attendance: 154
- Our Cookie Brigade “cooked” 4 first-time visitor households!

Financial Snapshot

Giving & Spending Update:

January 2010:		Year to Date:	
Actual		Actual	
Income	\$30,107.40	Income	\$30,107.40
Actual		Actual	
Expenses	\$29,539.69	Expenses	\$29,539.69
Budgeted		Budgeted	
Expenses	\$37,495.16	Expenses	\$37,495.16
Actual		Actual	
Difference	\$571.71	Difference	\$571.71

(Note: This reflects actual income and expenses towards our approved budget. It does not include income and expenses for special funds, such as Workcamp and Building Fund.)

We're off to a good start in 2010! However, we expect February expenses to be especially high, due in large part to snowplowing expenses. So, we're asking everyone to please make sure you keep up with your giving and to join us in the "20.10 in 2010" campaign!



To fully fund our Prince of Peace mission plan in 2010, we're asking all of our members to make an extra gift of \$20.10 once each month above what they've already pledged or planned to give. While we know that some of our people are having a difficult time right now, if a majority of us can do this, we'll be able to meet or exceed our regular expenses without having to use any savings or special fund drives. Your additional \$20.10 gift each month really will make a difference in the life of our congregation!

Some background:

Over the past couple of years, as we grew and added staff, we agreed that we'd use some savings and earnings from our Yard Sales to make up any deficit in our budget. However, our giving has been growing even in difficult financial times. We're hoping that this year is the year we can meet our budget without having to deplete any savings or funds like the Yard Sale proceeds which might be directed to other purposes.

If all active households currently at PoP made an extra \$20.10 gift each month this year, we'd have an additional \$45K with which to do ministry. Our budget plan projects that we can achieve at least \$24K.

However, in the event that giving doesn't reach this level, Council has proposed a series of back-up plans in which some or all funds from the 2009 Yard Sale, the 2010 Yard Sale, and a special Silent Auction fundraiser might be used to make up budget shortfalls. However, we have other things we'd rather do with these funds, including making additional gifts to help people in need and establishing a Capital Reserve Fund to take care of major, long-term maintenance needs. So, we're hoping to use little to none of these funds for this year's budget expenses.

Please join us for "20.10 in 2010!"

Council Corner

The PoP Church Council met on February 9. This article describes highlights of the meeting. For more details see the official, approved meeting minutes posted on the bulletin board in the Narthex near the front door.

This particular Church Council meeting was an unusual one. Because of the record-breaking snowfall and inability of members to drive to the church, this meeting was conducted as a dial-in conference call which was set up by David Yaney, our Council President. Almost everyone was able to dial in and participate.

Since we were unable to hold our regular Annual meeting on February 7, we are currently operating under the 2009 budget on a month-to-month basis. Outgoing Council members have had their terms extended another month until a new election can be held on March 7. All of this is covered by our Bylaws which actually envisioned this possibility.

Neil Howard had a question about the minutes from the January 2010 meeting, which described the budget approved by Council as containing \$44,800 for Social Ministry as opposed to \$43,800 and also \$500 for Education - Studies and Classes. Following a poll of everyone's collective memory, it was agreed that these were the intent of Council and the minutes were updated to reflect this intent and subsequently approved.

Pastor Sarah was very active in the last month in spite of all the bad weather. She has taken on a leadership role in Gaithersburg Help as the President. She has been working hard checking in on people during the storms, working with our education ministry team to find a chairperson, and developing our adult education ministry. She also has been working with PoP youth and developing leaders for that important ministry. Her article, *Worshipful Time at Home*, posted on the PoP web site, was written around the time we had to cancel the February 6-7 worship services. This article is linked to from the Metro DC synod web page. Way to go, Pr. Sarah! She also talked about the Lewis Fellows Leadership Program she attended in Florida. A big takeaway for her was how we adapt to change. She reviewed the concepts of Adaptive Change (change that takes time for people to get used to) and Technical Change (the logistical steps involved in any change). The bottom line was that we can make a change relatively quickly, but it takes people a while to get used to it.

Pastor Steve has also been away in Florida at a Head of Staff seminar with other Lutheran pastors February 4-7. He picked up several useful ideas from other pastors during the seminar. One idea was to use edited video clips of worship and other church events on the church web site to give prospective members a better idea of what goes on at PoP. He was successful in sending the notice announcing the cancellation of Saturday and Sunday services; Pastor Sarah had lost power and was unable to do this. Pastor Steve did it from a conference room in Florida using his wireless laptop. The other pastors thought that this was pretty cool! Even when Pastor Steve is in Florida, he's still on the job for PoP!

Bertha Carreras gave a summary of the financial reports for the month. We were in the black by \$571, but we had not sent in our synod benevolence of about \$1833. So we actually ended up a little behind this month as expenses were not out of line. Council made a commitment that we would send in the synod benevolence every month as our Constitution requires. Bertha has done a wonderful job improving our financial reporting to give a much better overall picture of PoP finances. Examples of this can be found in our Annual Report. She now includes a reconciliation of our checking account and investment account with the operating, restricted, and building funds to make sure things

balance and that it is easy to see where all the money is.

Following Bertha's reports, Neil made a motion that the Council will approve in advance all expenditures, transfers, and consolidations for our restricted fund accounts. This motion was amended to exclude Pastors' discretionary accounts and expenditures from designated funds for specific activities, such as social ministry non-budget benevolence. After some discussion this motion passed 8-3 with Pastor Sarah, Tim, and Jean in opposition.

We briefly discussed the launch of our "\$20.10 for 2010" program. Pastor Steve and David Yaney will take this on. We have already received some contributions to this.

If you would like to join in and see firsthand what goes on at a PoP Church Council meeting, please come! We (usually) meet in the Fellowship Hall from 7:30-9:30pm on the second Tuesday of each month.

- These notes were written by Neil Howard,
nhoward@comcast.net.

Recent Events

Snowmageddon, February 2010

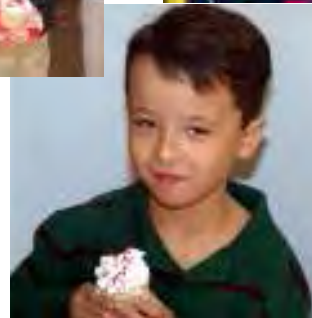




Quilt Dedication



Valentine Party



Movie Night, February 20



Stewardship

Creation Care

Carbon Fast Calendar - Every day during Lent you can do one easy thing to help the environment. Pick up a copy at church or visit the website!

Mission Statement

Our mission statement is "As we are called by God to be stewards of creation, the Creation Care Team shall promote appreciation, conservation, and sustainable use of natural resources in all aspects of congregational life and in the outside community through:

- Contemplation, prayer, and worship;
- Designing and implementing environmental education programs and activities;
- Regularly assessing and promoting practices that reduce the environmental footprint of our church;
- Advocating for environmental stewardship in the wider community."



The Creation Care Team has now set the first Saturday of each month from 9 - 10:30 am as a regular meeting time. Our next meeting is Saturday March 6. Please feel free to join us if

you are interested in helping out or even just want to see what is going on. Contact Pastor Sarah for more information at pastorsarah@poplutheran.org.

Fellowship

Lesa Sullivan (lesasullivan@comcast.net; 301-330-3686)

March 7: Our Congregational Meeting will be held immediately following a potluck lunch at noon. This is our annual meeting at which we'll elect new Council members, hear reports, and approve the 2010 budget. All confirmed members are urged to attend!



We also need people to: 1) prepare a tasty food item (i.e. Main Dish, Side Dish/Vegetable, Salad with Bread, or Dessert); 2) setup; 3) serve; and 4) clean up. You may volunteer for any of the four volunteer opportunities.

Please sign up in the Narthex or contact Lesa Sullivan at 301-330-3686; stevesullivan@comcast.net.

Interested in Fellowship?

Everyone is welcome to attend the monthly Fellowship meetings which are held at the church the fourth Tuesday of each month at 7:30. For more information, please call Lesa Sullivan at 301-330-3686.

Education

Wednesday Classes During Lent

Join us on Wednesday evenings from 7:45 until 9:15 for a special class on faith and money: "Your Money or Your Life."



"Your Money or Your Life" will look at the complex relationship between money and faith. In addition to studying scripture, we'll have some practical tools to help you live more abundantly, whatever your financial situation. Topics will include your personal money story and how it impacts your faith; God's economy (there is enough) and the myth of scarcity; personal financial management (debt, savings, investing, spending); Thrivent- why are the Lutherans in the money business and what do they do?; and Stewardship/cultivating generosity. Participants will be asked to write a money autobiography.

Gone Camping

Mar-Lu-Ridge is now taking registrations for summer camp. We're blessed to have such a superb Lutheran Camp less than an hour away. If you think your child would benefit from a week of growing closer to God with a spirited group of counselors and new friends in a beautiful setting, consider Mar-Lu-Ridge. There are camping experiences for ages 6-17, including some specialty camps like horseback, rock climbing, and performing arts. There's even a week for older kids (55+) to get away from it all. A full brochure is available at PoP or online at www.mar-lu-ridge.org.

High School Youth Ministry



Do you know that more than 1 billion people in the world don't get enough to eat? That's one of every seven people on the planet. To raise awareness and funds to help

the hungry kids of the world, the high school youth will be fasting **March 12-13** here at the church. The 30-Hour Famine is a worldwide movement of students who are serious about serving God and fighting hunger—all on an empty stomach. High school youth should sign up as soon as possible so we know how to plan for the event. We also are looking for adults to chaperone and for donations of juice to keep us hydrated during the famine. For more information, please contact Tam Harbert at tharbert@comcast.net.

Workcamp 2010 Update

Upcoming Events and Activities

PAYMENTS DUE

2nd payment due

ABSOLUTELY NO LATER THAN MARCH 14: \$250
(plus \$50 if you have not already paid a deposit)

final payment due

MAY 9: \$225

Make checks out to "Prince of Peace" and clearly mark Workcamp in the memo section. Payments may be left in the Workcamp mailbox in the Narthex or mailed to Prince of Peace, 11900 Darnestown Rd, Gaithersburg, MD 20878

PRE-CAMP MEETINGS - ALL CAMPERS

Everyone is expected to participate in these pre-

camp events. If you have an unavoidable conflict, please contact JoanneWWolfe@comcast.net; 301-926-3093.

SUNDAYS, 12:30 - 2:00

March 21 - Crew Roles/Devotion #1, "Myself"

April 11 - Servanthood/Devotion #2, "My Friends"

May 9 - Campers & Parents Meeting/Devotion #3, "My Family"; very important information and forms, and **all forms and final payment are due at this meeting!**

June 13 - Skills and Safety/Devotion #4, "My Faith"; note that this meeting will last two hours

June 26/27 - Commissioning Services (all services) - All workcampers will be recognized and commissioned at each service this weekend to do God's work, and the congregation will be asked to pray for all campers, so please plan to attend one of this weekend's services.

July 10-17 - Workcamp!

Final devotion Saturday evening, "My Future"

MULCHING FUNDRAISER

All campers will need to participate in at least one day of mulch spreading to help raise the funds we need to cover transportation costs. We will coordinate the schedule to spread mulch with the mulch delivery dates of the various high schools as follows:

March 20: Quince Orchard

April 10: Wootton

April 17: Northwest

THIS YEAR'S THEME: "UNDESERVED" - The Story of the Prodigal Son

Scripture: Luke 15:11-32

Central verse: Luke 15:24 - *"For this son of mine was dead and has now returned to life. He was lost, but now he is found. So the party began."*

During the camp week, we'll take a surprising look at the characters of this story and discover how they dealt with their father and how he dealt with them. Through that lens, campers will begin to understand why Jesus told us this amazing par-able and will have a daily opportunity to examine their own life and faith. It's about God's greatest desire - having a relationship with each of us.

Daily Themes

Monday: Myself

A look at the younger son and what drove him to

leave his home and family.

Tuesday: My Friends

Whom did the younger son hang out with while he was off in the far country? And, we'll look at the importance of the relationships that we choose and the effects they can have on our lives.

Wednesday: My Family

We'll examine the older son, and his response to the whole situation.

Thursday: My Faith

This is the most amazing part of the story - the father's response to his son's return.

Friday: My Future

For the younger son, his story ends with a new beginning - a party in his honor. The past is over, and a bright future is ahead.

SPARE CHANGE FOR CANNED FOOD DONATIONS



Due to the success of last year's effort, Group Workcamps is holding one of the largest canned food drives again this year! Last year's goal was to collect and distribute at least 125,000 cans of food throughout the summer.

They actually raised over 156,000 items by the end of the summer, so this year the goal is try to beat that effort! Each group is asked to bring at least 5 canned or boxed food items to camp for each camper. This is one more tangible way for the Workcampers to reveal God's love to the people they serve! All food will be donated to a local food pantry at the end of camp week.

At PoP, we're again asking the congregation to help us in this food drive. Since it will weigh us down to bring canned goods, we'll collect "spare change" at church each week starting after Easter until we leave on July 10 and use it to purchase canned food once we get to Mifflinburg. This worked really well last year in Elmira.

Now Hiring!

Are you looking for an amazing opportunity to grow your own faith, share the gospel, and play outdoors all summer? Consider joining the Summer Staff at Caroline Furnace Lutheran Camp. We're looking for counselors, support staff, lifeguards and an EMT/nurse. For more information, please visit



our website at www.CarolineFurnace.org; 540-933-6266.

Youth Ministry

March 6 and 7: Youth Saturday and Sunday

The youth of PoP will be greeters, ushers, lectors, communion assistants, minister assistants, acolytes, and actors in the drama ministry to deliver the sermon. To participate, youth may sign up in the narthex.

April 4: Easter Egg Hunt

The PoP Annual Easter Egg Hunt will be held Easter Sunday, April 4. Please check the bulletin/narthex for updated information.



We are looking for assistance with this event - we need volunteers to donate filled eggs, hide eggs, and to help coordinate. Please contact Kim Drissel (drissels@comcast.net) or Tracy Solomon (tracycsolo@comcast.net) if you would like to help out.

April 15: Faith-Full Families

The Faith-full Families Easter event will be held from 6-7:30 pm. Come join us for a potluck dinner, fellowship, crafts, and a bible story. Sign-up sheets will be the narthex in early April.

Social Ministries

Jennifer Maloney (maloney.jenn@gmail.com; 301-602-6358)

Lenten Sharing Bags

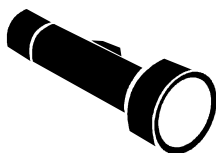
Pick up your Lenten Sharing Bag and purchase items to support these ministries in our community. **Please return your Sharing Bag by Sunday, March 21.**

The Interfaith Clothing Center, part of Interfaith Works, has been helping qualified low-income families in Montgomery County stretch their dollars for over 20 years. Coming from every corner of Montgomery County, clients are young and old, male and female, single and married, and span all races. They are working poor, homeless, disabled, recent immigrants, parolees, welfare recipients and seniors living on fixed incomes. At the Center, they can find new and gently used apparel and household items. Prince of Peace donates clothing



not sold at the yard sale to the Interfaith Clothing Center. Right now, there is a critical need for underwear and socks for all ages, children, teens, men and women. For more information, visit <http://www.iworksmc.org/p-interfaith-clothing-centers.html>.

Everyone enjoys summer camp, especially the children who participate in the **Lutheran Social Services/National Capital Area's Camp Kids Haven and Teen Retreats**. The week-long camp is designed specifically for young adults with HIV/AIDS; both events offer a supportive space for children to share their experiences with one another while having fun and learning valuable skills. About 50 campers attend the camp, held each summer at **Camp Mar-Lu-Ridge**, a beautiful, safe place in rural Maryland. PoP is collecting new pillows and new lightweight flashlights with batteries for the campers. Learn more at http://www.lsnca.org/lss/wwd_youth.



La Sagrada Familia, the Latino Ministry in Langley Park, MD, is a mission project of the ELCA to accompany the Latino community in helping with housing, improving educational opportunities for children, creating jobs and providing legal counsel on immigration issues. Students from **Lutheran Campus Ministries** (University of Maryland, College Park <http://terpconnect.umd.edu/~lutheran/>) provide after-school tutoring and activities for the children. PoP is gathering snacks, such as granola bars, peanut butter and jelly snack crackers, and fruit juice boxes, for the tutoring program.



Backdoor Projects

Gaithersburg HELP is serving more families than ever; when you shop, think about buying extra **peanut butter and jelly, pasta, sauce, tuna - and diapers**. Leave your donations in the baskets by the back door to be shared with families in need in our community. Recycle **old cell phones and chargers** to be shared with people at risk for domestic violence; bring **cancelled stamps** for the National Lutheran Home; **Campbell's soup labels** (actually only the UPC code, which go to the Navajo Evangelical Lutheran Mission); and **hotel-size toiletries** (for shelter residents). You can also recycle **used ink cartridges**.

Get Involved at the NLH!

Looking for an easy opportunity to get involved at Prince of Peace? Consider becoming our National Lutheran Home Keyperson. The responsibilities include advertising NLH Events at PoP and conducting one Auxiliary Membership Drive at PoP each year. If you would like more information, please contact Donna Von Wald (301-330-0404; DLHSJVW@RCN.com). Our 2010 Membership Drive will be this spring so that's a great time to learn the ropes.

Refuge in Times of Trouble

If you know someone who is sick, in the hospital, or in need that is a member of the congregation, please let us know! The Social Ministries Committee can offer services such as food, cards, or other specific needs. We can't help if we don't know. Contact Pastor Sarah Scherschlight at 301-869-3666 or at pastorsarah@poplutheran.org if you need help or know of someone who does.

Join the Team!

Want to become a part of the Social Ministries Team? The next meeting is Wednesday March 10 at 7:30 pm. Contact Jennifer Maloney at 301-602-6358; Maloney.jenn@gmail.com with questions or for more information.



Women's Book Group

Book Group had a lively discussion about *The Help* in February at the home of Karen Kimmel-Miltzer; members shared their own experiences of prejudice and also reflected on the many blessings and privileges that we often take for granted. In March, the group will meet on Thursday, March 11 at the home of Judy Bruening to discuss *A Year of Wonders* by Geraldine Brooks. *Publishers Weekly* recommended the book: "With an intensely observant eye, a rigorous regard for period detail, and assured, elegant prose, Brooks re-creates a year in the life of a remote British village decimated by the bubonic plague. Inspired by the actual town commemorated as Plague Village because of the events that transpired there in 1665-1666, Brooks tells her harrowing story from the perspective of 18-year-old Anna Frith, a widow with two young sons." This is the author's first novel; the group

has favorably reviewed two other works by Geraldine Brooks, *March* and *People of the Book*. The meeting starts at 7:30 pm; RSVP to Judy at jbb_4@comcast.net or 301-340-0704.

Book Group usually meets the second Thursday of the month in members' homes; in April and May, we will meet on Wednesday night. Books are selected by the group and all women of PoP and friends are welcome to attend the gatherings. To be added to the book group list, please contact Jennifer Maloney at



Maloney.jenn@gmail.com or 301-602-6358.

Future Dates:

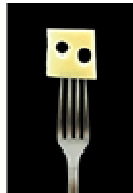
**Wednesday, April 7: *The Lost Symbol* by Dan Brown, hosted by Nancy Morton

**Wednesday, May 12: *The Girl with the Dragon Tattoo* by Stieg Larsson and Reg Keeland, hosted by Nancy Wolejsza

Thursday, June 10: *The Space Between Us* by Thrity Umrigar, hosted by Linda Marmillion

Women's Luncheon

Please join us for fun and good fellowship at the PoP Women's Luncheon held the first Monday of each month at Cusi in Kentlands at 11:30 am.



The schedule for the next three months is:
Monday, March 1
Monday, April 5
Monday, May 3

For more information please contact Karen Kimmel-Militzer at 240-477-4137.

Upcoming Events

PoP HS Youth Mulching Fundraiser

How it works:

You order and pay for mulch from your high school, as many of you already do, and thereby help support the activities of your school.

Then, you "hire" a group of PoP HS Youth to spread the mulch, and thereby help support our youth summer trips, get the work of spreading mulch throughout your yard done in record time, and save your backs!



When:

We will coordinate the schedule to spread mulch with the mulch delivery dates of the various high schools as follows:

Quince Orchard:	March 20
Wootton:	April 9, 10, 11
Northwest:	April 17
Others ? ?	

All proceeds will be used to help support our HS Youth mission trip this summer:

Workcamp 2010

Mifflinburg, Pennsylvania
July 10-17

Contact: Joanne Wolfe (301-926-3093);
JoanneWWolfe@comcast.net

Special Dates

- Daylight Savings Time Begins, March 14
- St. Patrick's Day, March 17
- First Day of Spring, March 20
- Palm Sunday, March 28



Today

Mend a quarrel. Search out a forgotten friend. Dismiss suspicion and replace it with trust. Write a love letter. Share some treasure. Give a soft answer. Encourage youth. Manifest your loyalty in a word or deed.

Keep a promise. Find the time. Forego a grudge. Forgive an enemy. Listen. Apologize if you were wrong. Try to understand. Flout envy. Examine your demands on others. Think first of someone else. Appreciate, be kind, be gentle. Laugh a little more.

Deserve confidence. Take up arms against malice. Decry complacency. Express your gratitude. Worship your God. Gladden the heart of a child. Take pleasure in the beauty and wonder of the earth. Speak your love. Speak it again. Speak it still again. Speak it still once again.

God's Days

There are two days upon which and about which I never worry - two carefree days kept sacredly free from fear and apprehension. One of these days is Yesterday. Yesterday, with its cares and fret and

pains and aches, all its faults, its mistakes and blunders, has passed forever beyond my recall. It was mine; it is God's.

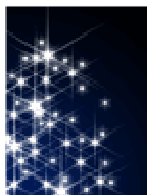
The other day that I do not worry about is Tomorrow. Tomorrow, with all its possible adversities, its burdens, its perils, its large promise and performance, its failures and mistakes, is as far beyond my mastery as its sister, Yesterday. Tomorrow is God's day; it will be mine.

There is left, then, for myself but one day in the week - Today. Any man can fight the battles of today; any woman can carry the burdens of just one day; any child can resist the temptation of today. It is only when we willfully add the burden of these two awful eternities - Yesterday and Tomorrow - such burdens as only the Mighty God can sustain - that we break down.

It isn't the experience of Today that drives us mad. It is the remorse of what happened Yesterday and fear of what Tomorrow might bring. These are God's Days, so leave them to Him.

—Robert J. Burdette

Our Deepest Fear



Our deepest fear is not that we are inadequate. Our deepest fear is that we are powerful beyond measure. It is our light, not our darkness, that most frightens us. We ask ourselves, Who am I to be brilliant, gorgeous, talented, fabulous? Actually, who are you not to

be? You are a child of God. Your playing small doesn't serve the world. There's nothing enlightened about shrinking so that other people won't feel insecure around you. You are born to make manifest the glory of God that is within you. It's not just in some of us, it's in everyone. And as we let our own light shine, we unconsciously give other people permission to do the same. As we're liberated from our own fear, our presence automatically liberates others.

—Nelson Mandela

A Little Extra Something

- Fear can keep us up all night long, but faith makes one fine pillow.

—Philip Gulley

- Worry never robs tomorrow of its sorrow, it only saps today of its joy.

—Leo Buscaglia

- Heavy thoughts bring on physical maladies; when the soul is oppressed so is the body.
—Martin Luther
- The submission of one's will is really the only uniquely personal thing we have to place on God's altar. The many other things we "give," ... are actually the things He has already given or loaned to us.
—Author Unknown
- That the birds of worry and care fly over your head, this you cannot change, but that they build nests in your hair, this you can prevent.
—Chinese Proverb

Contact the Pastors

Pastor Steve and Pastor Sarah are working together to make sure that pastoral care needs are met. To be certain that one of them is always "on," Pastor Steve takes Fridays off while Pastor Sarah takes Mondays off. You can reach both of them at the church office, or contact them by cell phone or email: Pastor Steve: 301-980-0160; pastor@poplutheran.org; Pastor Sarah: 202-870-8363; pastorsarah@poplutheran.org.

Visit Pastor Sarah's blog at www.thebarefootpastor.blogspot.com.

Glad Tidings is published monthly (July/August and December/January issues combined) by:
Prince of Peace Lutheran Church
11900 Darnestown Road
Gaithersburg, Maryland 20878-2210
E-mail: office@poplutheran.org
Web: www.poplutheran.org

Senior Pastor Steven Buechler
Associate Pastor Sarah Scherschligt
Council President David Yaney
Glad Tidings Editor Kris Sheely
Production Martha Rogers
Photography Neil Howard

Articles for the April issue of *Glad Tidings* are due **March 21, 2010**. Please e-mail articles to kristen.sheely@gmail.com or deliver to the newsletter mailbox outside the church office. Photos and/or graphics are welcome!
Glad Tidings is online at www.poplutheran.org.

© 2010 Prince of Peace Lutheran Church